

# Castlelaw

Scale 1:10000, contour interval 5m



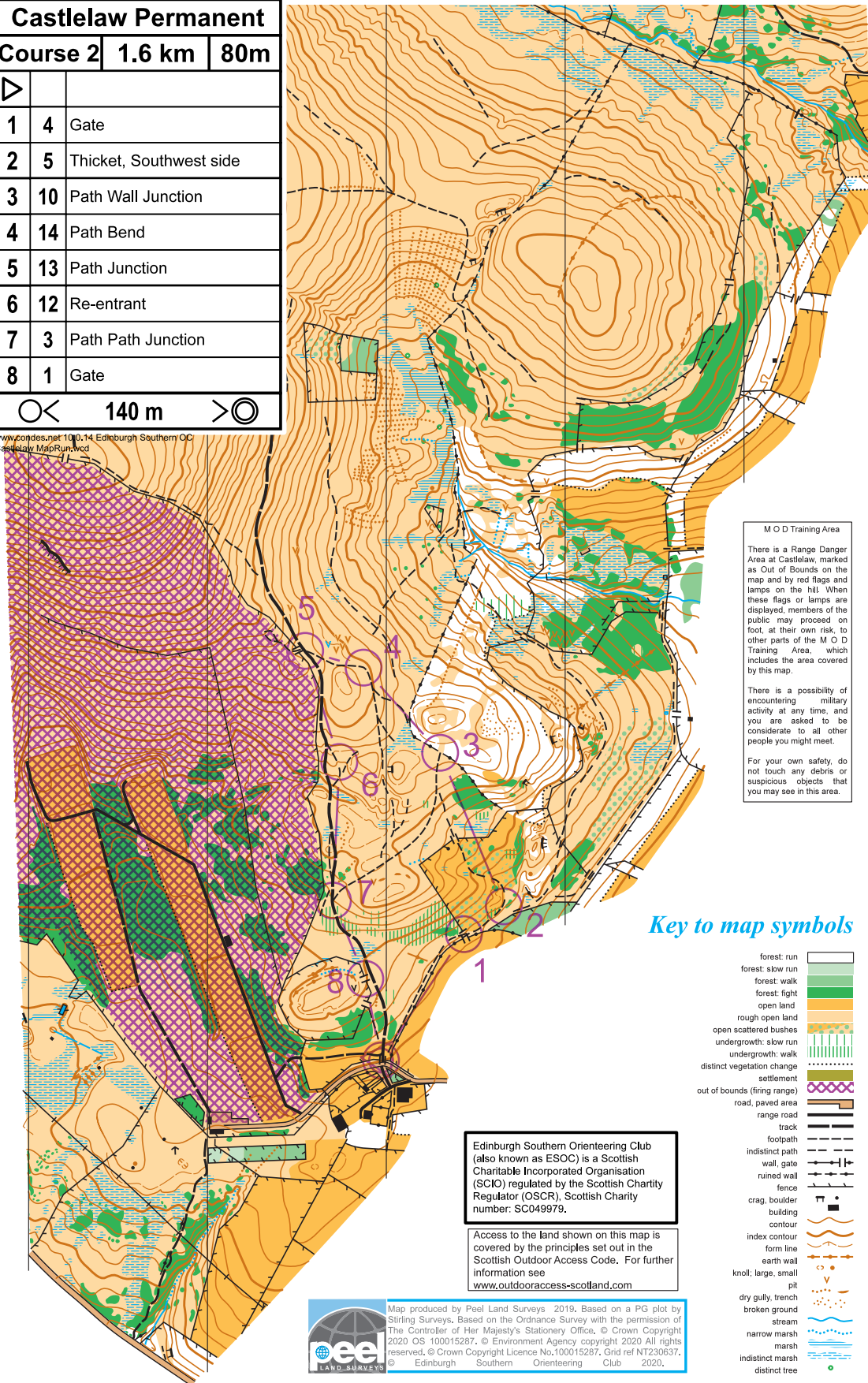
Grateful thanks are due to the Friends of the Pentlands for the installation of the posts and also for a financial contribution.

## Permanent Orienteering Course 2

We hope you enjoy this permanent orienteering course. Each control is located at a particular feature on the map, in the centre of the circle. At each control there will be a permanent marker with the appropriate number and a letter. You must visit the controls in the order specified.

Castlelaw Permanent		
Course 2	1.6 km	80m
1	4	Gate
2	5	Thicket, Southwest side
3	10	Path Wall Junction
4	14	Path Bend
5	13	Path Junction
6	12	Re-entrant
7	3	Path Path Junction
8	1	Gate
	140 m	

[www.codes.net](http://www.codes.net) 10.0.14 Edinburgh Southern OC  
Castlelaw MapRun.vcd



**M O D Training Area**

There is a Range Danger Area at Castlelaw, marked as Out of Bounds on the map and by red flags and lamps on the hill. When these flags or lamps are displayed, members of the public may proceed on foot, at their own risk, to other parts of the M O D Training Area, which includes the area covered by this map.

There is a possibility of encountering military activity at any time, and you are asked to be considerate to all other people you might meet.

For your own safety, do not touch any debris or suspicious objects that you may see in this area.

### Key to map symbols

- forest: run
- forest: slow run
- forest: walk
- forest: fight
- open land
- rough open land
- open scattered bushes
- undergrowth: slow run
- undergrowth: walk
- distinct vegetation change
- settlement
- out of bounds (firing range)
- road, paved area
- range road
- track
- footpath
- indistinct path
- wall, gate
- ruined wall
- fence
- crag, boulder
- building
- contour
- index contour
- form line
- earth wall
- knoll: large, small
- pit
- dry gully, trench
- broken ground
- stream
- narrow marsh
- marsh
- indistinct marsh
- distinct tree

Edinburgh Southern Orienteering Club (also known as ESOC) is a Scottish Charitable Incorporated Organisation (SCIO) regulated by the Scottish Charity Regulator (OSCR), Scottish Charity number: SC049979.

Access to the land shown on this map is covered by the principles set out in the Scottish Outdoor Access Code. For further information see [www.outdooraccess-scotland.com](http://www.outdooraccess-scotland.com)